



International Bilingual School at Central Taiwan Science Park

Regulations Regarding the Assessments of Student Performance and Achievements

1. The regulation is based on Taiwan Ministry of Education’s “*Regulations Regarding the Assessments of Student Performance and Achievements at Hight School*”, and is applicable to all grade 9 to 12 students in International Bilingual School at Central Taiwan Science Park (IBSC).

2. Graduation requirements:

(1) Students must earn at least 44 credits in order to graduate from IBSC. The credit requirements listed here are the total for all four years of high school.

	Grade 9		Grade 10		Grade 11		Grade 12		Total Credits		Graduation Requirement
	Fall	Spring	Fall	Spring	Fall	Spring	Fall	Spring	Fall	Spring	
Chinese	1	1	1	1	1	1	1	1	8		6
Language Arts	1	1	1	1	1	1	1	1	8		8
Math	1	1	1	1	1	1	1	1	8		6
Social Studies	1	1	1	1	1	1	1	1	8		6
Science	1	1	1	1	1	1	0	0	6		4
PE/Health	0.5	0.5	0.5	0.5	0.5	0.5	1	1	5		5
Performing Arts	0.5	0.5	0.5	0.5	0.5	0.5	0.5	0.5	4		3
Electives	1	1	1	1	1	1	1	1	8		6

(2) For transfer students, the credit requirement for Chinese courses will diminished proportionally.

- Grade 10 transfer students will need 4 credits in Chinese
- Grade 11 transfer students will need 2 credits in Chinese
- Grade 12 transfer students will not need to have credits in Chinese

(3) Performing Arts graduation credit must include both course-taking and graduation exhibition (IBSC presentation day for instance).

(4) IBSC offers two types of elective courses: regular electives and AP electives. Students who choose to take regular electives will enroll in two courses per semester and will earn 0.5 credit for each course. Students who choose to take AP electives will enroll in 1 elective course per semester and will earn 1 credit for the course.

(5) Credits are awarded to elective courses either under their “parent” subject, or as elective credits, based on student need.

3. Grading policy:

(1) In IBSC, a letter grade will be given for every course that students enroll in. The letter grade will then be transferred to a grade point average (GPA) based on the scale below:

Percentage Score	0-59	60-62	63-66	67-69	70-72	73-76	77-79	80-82	83-86	87-89	90-92	93-96	97-100
Letter Grade	F	D-	D	D+	C-	C	C+	B-	B	B+	A-	A	A+
GPA (Standard)	0	0.7	1	1.3	1.7	2	2.3	2.7	3.0	3.3	3.7	4.0	4.3
GPA (AP courses)	0	1.2	1.5	1.8	2.2	2.5	2.8	3.2	3.5	3.8	4.2	4.5	4.8

- Students’ percentage scores are rounded to the nearest integer before converted in to letter grades.
- Students receive a GPA score on every subject that they take for the semester. Their semester GPA will be the average of the subject GPAs (the sum of the GPAs/ the total credit they take this semester), rounded to the nearest tenth.

(2) IBSC grading system

- For Chinese, Language Arts, Social Studies, Science, Math and electives, IBSC follows the following grading system:

Midterm		Final	
In-Class Score	Exam Score	In-Class Score	Exam Score
35%	15%	35%	15%

- For PE/Health and Performing Arts, IBSC follows the following grading system:

Whole Semester	
In-Class Score	Exam Score
70%	30%

- The exam scores are determined by paper exams or alternative assessments, depending on teachers’ lesson plans.
- The In-Class scores shows students’ in-class behavior and learning outcome, and are determined by in-class work, assignments, participation, and students’ academic attitude.

- (3) Students who receive a semester percentage score over 60 are considered passing the course and will earn the credit. Students who receive a semester percentage score below 60 are considered not passing the course and will not earn the credit. The passing score for students with special needs might change according to Taiwan governments' IEP program.
- (4) If the average score of the whole school year (fall + spring semester) is above 60, students will earn both the credit of the fall semester and the credit of the spring semester.

4. Make-up assessment:

- (1) Students who do not pass a course but receive a semester percentage score over 40 are eligible to take the make-up assessment held after the semester ends.
- (2) Students should sign up for the make-up assessment before the application deadline by filling out the form in Appendix A.
- (3) Students can only apply for make-up assessment to the courses that they took in the past semester.
- (4) The make-up assessment can be a written exam or an alternative assessment. IBSC academic affairs section will announce the day for make-up exams. For subjects doing alternative assessment for make-up, students have to contact the subject teachers to get the instructions.
- (5) Students who pass the make-up assessment will receive a score of 60 and earn the credit. Those who do not pass the make-up assessment will not receive the credit and the final score of the course will be the higher between the original score and the make-up assessment.

5. Make-up course

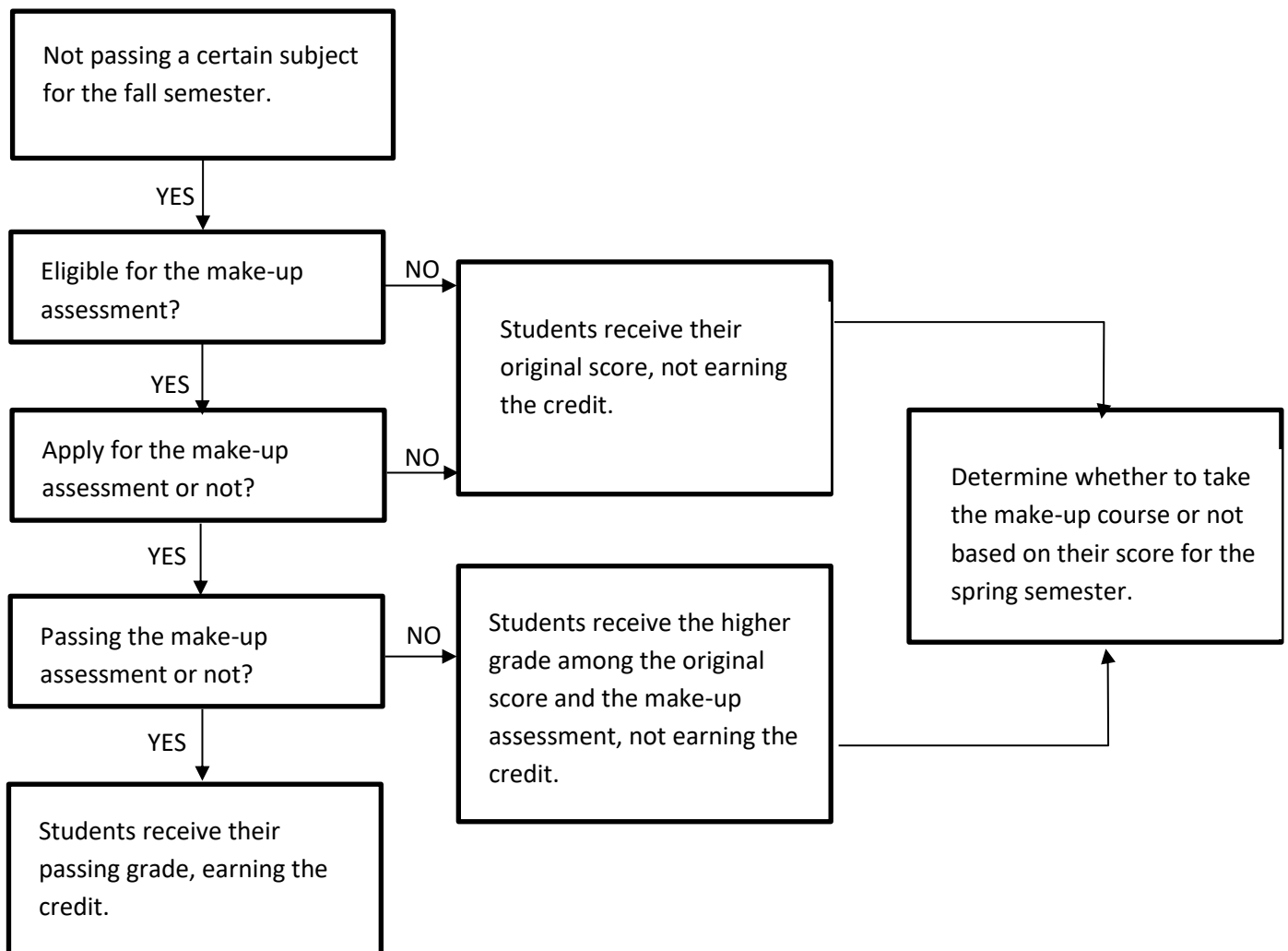
- (1) All students who do not pass a course are eligible to apply for the make-up course.
- (2) Students should sign up for the make-up course before the application deadline by filling out the form in Appendix A.
- (3) Students can apply for make-up courses to any course that they did not pass in the past, but can only take make-up courses once for every subject.
- (4) Conduction of make-up courses:
 - If there are more than 15 students applying for the make-up course for a certain subject, class sessions will be held during summer or winter vacation. Students will have to come to school and attend the sessions, get evaluated, and pass the evaluation to complete the make-up course and earn the credit.
 - If there are less than 15 students applying for the make-up course for a certain subject, make-up course will be done via the form of self-studying with guidance and evaluation. That is, subject teachers will schedule meetings with student with designated assignments and tasks, and students need to complete the evaluation done by the subject teacher in the end of the meetings to complete the make-up course and earn the credit.

(5) Required hours and fees:

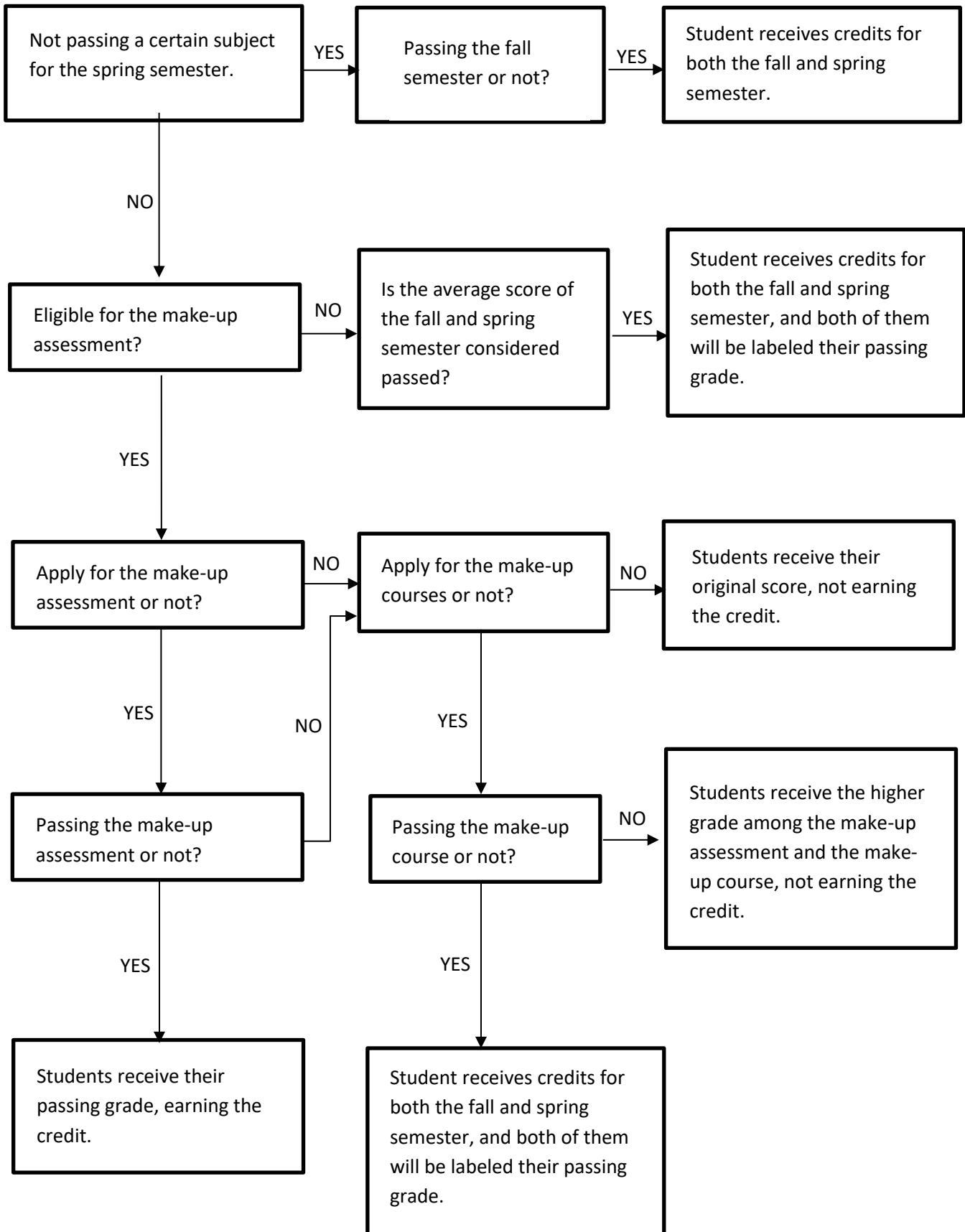
- For class sessions more than 15 students, students need to take at least 6 hours of class for every hour of the original course per week. The fees for will be $(40 \text{ NTD}) * (\text{total hours of class taken})$ per student.
- For students participating in self-studying with guidance and evaluation, they need to meet with the subject teacher for at least 3 hours for every hour of the original course per week. The fees will be $(240 \text{ NTD}) * (\text{the number of hours per week for the original class})$ per student.

(6) Students who pass the evaluation after the make-up course will receive a 60 or their decided passing grade on the subject and earn the credit.

6. Make-up assessment and courses conducting procedure for the fall semester:



7. Make-up assessment and courses conducting procedure for the spring semester:





Application form of Make-up Assessment and Make-Up Courses

Student Name:

Current Grade:

Student ID number:

Apply for make-up assessment (only for the past semester)

<input type="checkbox"/> Chinese Original score:	<input type="checkbox"/> Language Arts Original score:	<input type="checkbox"/> Math Original score:	<input type="checkbox"/> Social Studies Original score:
<input type="checkbox"/> Science Original score:	<input type="checkbox"/> Electives _____ Original score:	<input type="checkbox"/> PE/Health Original score:	<input type="checkbox"/> Performing Arts Original score:

Apply for make-up courses

Semester	Grade	Subject	Hours per week
Fall/Spring			
Fall/Spring			
Fall/Spring			
Fall/Spring			
Fall/Spring			

Applying date:

Parent Signature:

Parents' contact number:

IBSC Academic Affairs Section:

Dean of IBSC: